

CAR AUDIO | 2018





We, Focal,
strive to create sound
equipment that honours the artist's
musical creation and empowers you to
feel a new dimension of the music. We want
every nuance to be revealed with precision and
purity. To do this, we push the limits of the current
boundaries in sound technology, and go beyond
the traditional approach thinking differently.
With Focal, let the sound thrill your senses
until you go beyond the usual perception
of music and discover new fields
of emotion.

LISTEN BEYOND

“ THE AMPLIFIED DRIVING EXPERIENCE ”



For nearly four decades, Focal has been applying its unique sound signature to speaker drivers and high-end loudspeakers. We are renowned worldwide for our innovations which have given birth to exclusive technologies, and some of our loudspeakers have gone on to become world-renowned references.

Our philosophy is to promote our expertise made in France: 100% of our products are designed and developed by our engineers, and a large part of our collections are made in France in our own workshops. All Focal products benefit from innovations which result from the on-going research in the field of acoustics. This technological heritage, protected by numerous patents, ensures a sound which is clear, powerful and true to nature; for providing the best audio systems in each category.

The love for music combined with the passion for cars spawned Focal's Car Audio collections in the 1990s. These car audio systems and kits are designed to enable car enthusiasts to enhance their driving experience with audiophile sound. From the most prestigious customised installations to easy-to-install kits, every solution is optimised for your vehicle. Our technology is packed with the best innovations and materials to enhance your audio environment, and to make your journey a moment of intense pleasure.

Our collection of audio solutions is adapted to all styles and all uses:

- **Elite:** on-board audio perfection: get the highest musical quality for your car thanks to these customised installations capable of exceptional performance.
- **Performance:** treat yourself to powerful and demonstrative sound through a sound system which reflects who you are.
- **Integration:** discreet and easy to install, a simple way to improve your vehicle's acoustics without altering the factory system.

Innovation and performance, the highest levels of expertise and pleasure are the brand's values. They define Focal's signature, whose unique goal is to take you beyond sound.

ELITE

'Haute couture' sound

Is your car a gem bespoke to you? Is ultimate sound quality never far from your thoughts?

If so, then Elite is for you: The Focal name is synonymous with unique, hand-made equipment to help you achieve the absolute performance from your music. Based on rare, precious metals, this range uses the very latest technologies, strong in the heritage of the Grande Utopia EM, currently considered as one of the best loudspeakers in the world. Made in France, these dream products, available in **Utopia and K2 Power lines**, are the natural choice for bespoke installations implemented exclusively for you by our expert installers.

D1

UTOPIA
'À la carte' concept 9

D2

K2 POWER
More than products,
a lifestyle! 20





UTOPIA

NEW



Patent n° WO2017/103360A1

'À la carte' concept

For years the Utopia range has been a myth for all music and car lovers. It has become a benchmark thanks to our unique technologies.

With our rich history and strong DNA, we set ourselves a huge challenge: to renew the range and establish a new reference of high-end drivers in the market.

And thus Utopia M was born, the quintessence of our expertise and our latest patented technologies.

Utopia M is an innovative, 'à la carte' concept, that lets you build your own bespoke system depending on your vehicle, the only limit being your creativity and that of the installer fitting it.

When devising its unique design, a mix of tradition and innovation, our designers drew on the codes and richness of French architecture.

This work was possible thanks to the development of our patented 'M'-profile 'W' sandwich cone, which pushes the boundaries by perfectly combining the 3 criteria essential for creating the ideal driver: rigidity/lightness/damping.

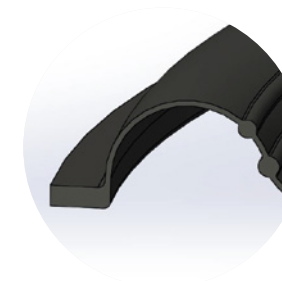
In combination with our patented TMD® surround, distortion is reduced, thus increasing the precision and realism of the midrange.

Our Beryllium tweeter also benefits from these innovations and includes an 'M'-shape inverted dome combined with our TMD® surround, which provides a striking level of detail.

With Utopia M, the legend continues...



> 'M'-profile 'W' sandwich cone



> TMD® (Tuned Mass Damper)



> Red neodymium motor



> 'M'-shape Beryllium dome and TMD®



ELITE UTOPIA M Tweeter - 'À la carte' concept

TBM

- Pair of tweeters
- 'M'-shape pure Beryllium dome
- Voice-coil diameter: 1" (25mm)
- Motor: Neodymium
- Surround: Tuned Mass Damper (TMD*)
- Max. power: 200W
- Nom. power: 20W RMS
- Sensitivity (2.83V/1m): 95dB
- Frequency response: 15kHz - 40kHz
- Impedance: 4Ω
- Other: Fixed grille, built-in
- Supplied mounting bracket



ELITE UTOPIA M

6" Woofer and 3.5" Midrange - 'À la carte' concept

6 WM

Pair of woofers
Diameter: 6¹/₂" (165mm)
'M'-profile 'W' cone
Voice coil: 3⁵/₃₂" (80mm)
Motor: Neodymium
Surround: Tuned Mass Damper (TMD®)
Max. power: 200W
Nom. power: 100W RMS
Sensitivity (2.83V/1m): 91.5dB
Frequency response: 60Hz - 6kHz
Impedance: 4Ω
Accessories: Optional grille



3.5 WM

Midrange
Diameter: 3.5" (87.5mm)
'M'-profile 'W' cone
Voice coil diameter: 1¹⁹/₆₄" (45mm)
Motor: Neodymium
Surround: Tuned Mass Damper (TMD®)
Max. power: 100W
Nom. power: 50W RMS
Sensitivity (2.83V/1m): 88dB
Frequency response: 200Hz - 10kHz
Impedance: 4Ω
Accessories: Optional grille



6" grille

'M'-shape design
Aluminium ring

Sold separately by unit



3.5" grille

'M'-shape design
Aluminium ring

Sold separately by unit



ELITE UTOPIA M

8" Woofer - 'À la carte' concept

8 WM

Woofer
Diameter: 8" (200mm)
'M'-profile 'W' cone
Voice coil: 3^{5/32"} (80mm)
Motor: Neodymium
Surround: Tuned Mass Damper (TMD*)
Max. power: 200W
Nom. power: 100W RMS
Sensitivity (2.83V/1m): 91.8dB
Frequency response: 45Hz - 5kHz
Impedance : 4Ω
Accessories : Optional grille



8" grille

'M'-shape design
Aluminium ring

Sold separately by unit





ELITE UTOPIA M

10" Subwoofer - 'À la carte' concept

SUB 10 WM

Subwoofer
Diameter: 10" (250mm)
Mounting depth: 4^{1/4"} (108mm)
'M'-profile 'W' cone
Dual voice coil diameter: 4^{23/32"} (120mm)
Motor: Neodymium
Max. power: 800W
Nom. power: 400W RMS
Sensitivity (2.83V/3ft): 87.5dB
Frequency response: 25Hz - 800Hz
Impedance: 2 x 4Ω

Suggested load volume:
0.35 cu ft (10l) in sealed enclosure



ELITE UTOPIA

2-way component kit



Utopia wouldn't be Utopia without this new 165W-XP kit. An evolution of one of our most iconic products, it opens the door to this world and its exceptional performance. It integrates our latest technologies such as the TMD® surround, a progressive spider and a new, pure Beryllium inverted dome tweeter.



165W-XP Passive

2-way component kit
 Diameter: 6⁷/₈" (165mm)
 Composite "W" sandwich cone
 Voice-coil diameter: 1¹/₄" (32mm)
 Pure Beryllium inverted dome tweeter
 Crossover: 12/18dB bi-amp
 Adjustable tweeter level: +3; 0dB/oct
 Max. power: 200W
 Nom. power: 100W RMS
 Sensitivity (2.83V/1m): 93dB
 Frequency response: 60Hz - 40kHz
 Impedance: 2Ω
 Accessories: Grilles included

ELITE UTOPIA

Ultima Kit

A unique sensation in the world, experience the Grande Utopia EM in your car. Ultima is a full active car audio kit designed and inspired by the best drivers used in our high-end loudspeakers.

TW Ultima

Diameter: 2⁵/₁₆" (75mm)
 Pure Beryllium inverted dome
 Motor: Neodymium IAL2 motor
 Max. power: 200W (with filtering)
 Nom. power: 50W RMS (with filtering)
 Sensitivity (2.83V/1m): 93dB
 Impedance: 6Ω
 Frequency Response: 500Hz to 40kHz

Suggested load volume:
 0.01 cu ft (0.3l) in sealed enclosure



6 W Ultima

Diameter: 6⁷/₈" (165mm)
 "W" composite sandwich cone
 Voice-coil diameter: 1⁹/₁₆" (40mm)
 Motor: Power Flower multi ferrite
 Max. power: 240W
 Nom. power: 120W RMS
 Sensitivity (2.83V/1m): 90.5dB
 Impedance: 4Ω
 Frequency Response: 60Hz to 4.5kHz
 Accessory: Aluminum engraved ring

Suggested load volume:
 1 cu ft (30l) in sealed enclosure



8 W Ultima

Diameter: 8" (200mm)
 "W" composite sandwich cone
 Voice-coil: 2" (50mm)
 Motor: Dual ferrite
 Max. power: 600W
 Nom. power: 300W RMS
 Sensitivity (2.83V/1m): 90.2dB
 Impedance: 6Ω
 Frequency Response: 40Hz to 120Hz

Suggested load volume for 1 subwoofer:
 0.79 cu ft (22.5l) in ported enclosure
 Port size suggested:
 6¹/₁₆" x 2³/₈" (17cm x 6cm)



Full active Ultima kit* in its wood Black Satin case.
 Included authenticity certificate, user manual, Focal tool CD for settings.

Composition of the kit:
 2xTweeters,
 2xMidbass,
 2xSubwoofers

* Within the limit of available product stock.

K2 POWER



More than products, a lifestyle!

Besides its distinct yellow colour, the K2 Power line has become a lifestyle object in its own right worldwide. Once more, our engineers have pushed back the limits of performance to continue making the reputation of this extraordinary line synonymous with power and precision!

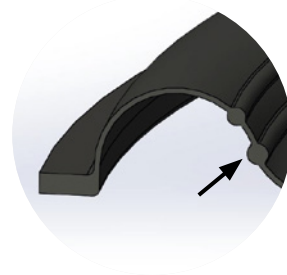
The K2 Power's composite sandwich cone combines three key features: rigidity, lightness and damping. This unique expertise 'Made in Focal' combines a new patented TMD* (Tuned Mass Damper) rubber surround which controls unwanted resonances to provide a clean and neutral midrange with very low harmonic distortion.

The ventilated voice-coil gap keeps the temperature of the voice-coil low and stable for increased power handling and reliability. The subwoofers have been designed to work in very compact volumes while having a very high SPL and an amazing energy!

Finally, the major innovation of this line made in France is the 'M' profile aramidfibre inverted dome tweeter. This totally exclusive 'M' profile inverted dome tweeter has been specifically designed to increase precision in the very high frequencies. The push-pull motor inspired by the IAL technology dampens acoustic resonances on the back of the membrane and extends the low end of the frequency response, in a very compact housing.



> K2 Power sandwich cone



> TMD* (Tuned Mass Damper)



> Ventilated voice coil cooling system



> 'M' profile inverted dome tweeter



ELITE K2 POWER

2-way coaxial and component kits

EC 165 K

2-way coaxial kit
Diameter: 6¹/₂" (165mm)
K2 composite sandwich cone
Voice-coil diameter: 1" (25mm)
Voice-coil height: 0⁹/₁₆" (15mm)
Motor: Ferrite
Tweeter: TKM ('M' profile aramid-fibre inverted dome)
Surround: Tuned Mass Damper (TMD)
Max. power: 160W
Nom. power: 80W RMS
Sensitivity (2.83V/1m): 93dB
Frequency response: 60Hz-22kHz
Impedance: 4Ω
Supplied with grille



ES 100 K

2-way component kit
Diameter: 4" (100mm)
K2 composite sandwich cone
Voice-coil diameter: 0³/₁₆" (20mm)
Voice-coil height: 0¹/₃₂" (8.5mm)
Motor: Neodymium
Tweeter: TKM ('M' profile aramid-fibre inverted dome)
Surround: Tuned Mass Damper (TMD)
Separated crossover: 12/12dB (3.5kHz)
Tweeter adjustable level: +3; 0; -3dB
Max. power: 120W
Nom. power: 60W RMS
Sensitivity (2.83V/1m): 90dB
Frequency response: 110Hz-22kHz
Impedance: 4Ω
Supplied with grille



ES 130 K

2-way component kit
Diameter: 5" (130mm)
K2 composite sandwich cone
Voice-coil diameter: 1" (25mm)
Voice-coil height: 0¹/₃₂" (12mm)
Motor: Ferrite
Tweeter: TKM ('M' profile aramid-fibre inverted dome)
Surround: Tuned Mass Damper (TMD)
Separated crossover: 6-12/12dB (3.5kHz)
Tweeter adjustable level: +3; 0; -3dB
Max. power: 160W
Nom. power: 80W RMS
Sensitivity (2.83V/1m): 90dB
Frequency response: 65Hz-22kHz
Impedance: 4Ω
Supplied with grille



ES 165 K

2-way component kit
Diameter: 6¹/₂" (165mm)
K2 composite sandwich cone
Voice-coil diameter: 1¹/₄" (32mm)
Voice-coil height: 0⁹/₁₆" (15mm)
Motor: Ferrite
Tweeter: TKM ('M' profile aramid-fibre inverted dome)
Surround: Tuned Mass Damper (TMD)
Separated crossover: 6-12/12dB (3kHz)
Tweeter adjustable level: +3; 0; -3dB
Max. power: 200W
Nom. power: 100W RMS
Sensitivity (2.83V/1m): 90.8dB
Frequency response: 60Hz-22kHz
Impedance: 4Ω
Supplied with grille



ES 165 K2

2-way component kit
Diameter: 6¹/₂" (165mm)
K2 composite sandwich cone
Voice-coil diameter: 1¹/₄" (32mm)
Voice-coil height: 0⁹/₁₆" (15.5mm)
Motor: Ferrite
Tweeter: TKM ('M' profile aramid-fibre inverted dome)
Surround: Tuned Mass Damper (TMD)
Separated crossover: 6-12/12dB (3.5kHz)
Tweeter adjustable level: +3; 0; -3dB
Max. power: 200W
Nom. power: 100W RMS
Sensitivity (2.83V/1m): 92.8dB
Frequency response: 60Hz-22kHz
Impedance: 2Ω
Supplied with grille



ELITE K2 POWER

2 and 3-way component kits

ES 165 KX2

2-way component kit
Diameter: 6¹/₂" (165mm)
K2 composite sandwich cone
Voice-coil diameter: 1⁹/₁₆" (40mm)
Voice-coil height: 0²/₃₂" (16.5mm)
Motor: Ferrite
Tweeter: TKMX ('M' profile aramid-fibre inverted dome)
Surround: Tuned Mass Damper (TMD)
Separated crossover: 6-12/12-18dB (3kHz)
Tweeter adjustable level: +3; 0; -3dB
Max. power: 240W
Nom. power: 120W RMS
Sensitivity (2.83V/1m): 92.5dB
Frequency response: 55Hz-22kHz
Impedance: 2Ω
Supplied with grille



ES 165 KX3

3-way component kit
Diameter: 6¹/₂" (165mm)
K2 composite sandwich cone
Voice-coil diameter: 1⁹/₁₆" (40mm)
Voice-coil height: 0²/₃₂" (16.5mm)
Motor: Ferrite
Tweeter: TKMX ('M' profile aramid-fibre inverted dome)
Surround: Tuned Mass Damper (TMD)
Separated crossover: 6-12/12-18dB (3/4/500Hz/3.5kHz)
Tweeter adjustable level: +3; 0; -3dB
Max. power: 240W
Nom. power: 120W RMS
Sensitivity (2.83V/1m): 93dB
Frequency response: 45Hz-22kHz
Impedance: 4Ω
Supplied with grille



ELITE K2 POWER

Subwoofers

E 25 KX

Subwoofer
Diameter: 10" (250mm)
K2 composite sandwich cone
Mounting depth: 6⁴/₉/₆₄" (172mm)
Voice-coil diameter: 2⁹/₁₆" (65mm)
Voice-coil height: 2³/₁₆" (55mm)
Motor: Dual ferrite
Max. power: 1200W
Nom. power: 600W RMS
Sensitivity (2.83V/1m): 84.5dB
Frequency response: 25Hz-500Hz
Impedance: dual 4Ω



E 30 KX

Subwoofer
Diameter: 12" (300mm)
K2 composite sandwich cone
Mounting depth: 6⁴/₉/₆₄" (172mm)
Voice-coil diameter: 2⁹/₁₆" (65mm)
Voice-coil height: 2³/₁₆" (55mm)
Motor: Dual ferrite
Max. power: 1600W
Nom. power: 800W RMS
Sensitivity (2.83V/1m): 86.5dB
Frequency response: 25Hz-500Hz
Impedance: dual 4Ω



ELECTRONICS

Are you looking to enjoy the sensations of astonishingly precise and powerful car audio which is perfectly controlled and stable in your vehicle?

Focal's range of electronic products will enhance your car audio system so you can get the most out of your music while at the wheel. They will enable you to create a sound processing system with all the electronics you need to satisfy your desires. Create exactly the right set-up you're looking for, in confined or adequate spaces: the system can be optimised using a **digital signal processor** and one or more **amplifiers**. Thanks to our ranges of FPX and FDS amplifiers, and to our FSP-8 sound processor, you'll immediately find the perfect balance of power and audio quality.

These electronic products will give you the best results with our **Elite** and **Performance** ranges.

AMPLIFIERS

Huge power, compactness, efficiency

The FPX range combines the best of modern amplification technologies to provide high performances and musical precision: the Premium understanding by FOCAL!



FPX 5.1200

Class D amplifier - 5 channels
CEA Power (4Ω): 4x75W RMS + 1x420W RMS
Power max (2Ω): 4x120W RMS + 1x720W RMS
Configurable Crossovers High-Pass/Low-Pass: 50Hz - 500Hz
Copy Mode (6CH/4CH/2CH)
Full range Mode
Bass Boost
Subsonic filter
Ajustable Phase
Protections: Short circuit/over-current/reverse polarity/DC/voltage drop/heat protection
Dimensions (LxHxW): 11^{15/16}"x6^{57/64}"x2^{1/4}" (300x175x57mm)
Weight: 9.038 lbs (4.1kg)
Remote control included



FPX 4.400 SQ

"The Sound Quality amplifier of the range"

Class AB amplifier - 4/3/2 channels
CEA power (4Ω): 4x70W RMS
Max. power (2Ω): 4x100W RMS
Max. power (4Ω bridged): 2x200W RMS
Configurable Crossovers High-Pass/Low-Pass: 50Hz-5000Hz
Copy Mode (4CH/2CH)
Full range Mode
Protections: Short circuit/over-current/reverse polarity/DC/voltage drop/heat protection
Dimensions: 12^{23/64"}x6^{53/64"}x2^{1/4"} (314x175x57mm)
Weight: 8.16lbs (3.7kg)

FPX 2.750*

Class D amplifier - 2 channels/mono
CEA power (4Ω): 2x220W RMS
Max. power (2Ω): 2x385W RMS
Max. power (4Ω bridged): 1x770W RMS
Configurable Crossovers High-Pass/Low-Pass: 50Hz-500Hz
Full range Mode
Protections: Short circuit/over-current/reverse polarity/DC/voltage drop/heat protection
Dimensions: 9^{21/64"}x5^{13/64"}x2^{3/32"} (237x132x53mm)
Weight: 4.40lbs (2kg)

FDS 4.350

Class D amplifier - 4/3/2 channels
RCA low-level inputs
CEA power (4Ω): 4x58W RMS
Max. power (2Ω): 4x100W RMS
Max. power (4Ω bridged): 2x200W RMS
Configurable high-pass/low-pass crossover: 40Hz-400Hz
Full range mode
Protections: Short-circuit/low impedance/reversal of polarity/DC/power drop/overheating protection
Dimensions (DxWxH): 7^{13/16"}x1^{11/16"}x4^{1/4"} (199x43x108mm)
Weight: 1.8lbs (850g)

FDS 1.350

Class D amplifier with dual output - Mono
RCA low-level inputs
CEA power (4Ω): 1x210W RMS
Max. power (2Ω): 1x350W RMS
Low-pass crossover: 40Hz-400Hz
Progressive phase adjustment (0-180°)
Bass boost (0/6dB/12dB)
Protections: Short-circuit/low impedance/reversal of polarity/DC/power drop/overheating protection
Dimensions (DxWxH): 7^{13/16"}x1^{11/16"}x4^{1/4"} (199x43x108mm)
Weight: 1.8lbs (850g)

FPX 4.800

Class D amplifier - 4/3/2 channels
CEA power (4Ω): 4x120W RMS
Max. power (2Ω): 4x185W RMS
Max. power (4Ω bridged): 2x370W RMS
Configurable Crossovers High-Pass/Low-Pass: 50Hz-500Hz
Copy Mode (4CH/2CH)
Full range Mode
Protections: Short circuit/over-current/reverse polarity/DC/voltage drop/heat protection
Dimensions: 9^{21/64"}x5^{13/64"}x2^{3/32"} (237x132x53mm)
Weight: 4.40lbs (2kg)

FPX 1.1000

Class D amplifier - Mono
CEA power (4Ω): 1x420W RMS
Max. power (2Ω): 1x700W RMS
Max. power (1Ω): 1x1000W RMS
Configurable Low-Pass Crossover: 50Hz-250Hz
Bass Boost - Progressive Phase - Subsonic
Protections: Short circuit/over-current/reverse polarity/DC/voltage drop/heat protection
Dimensions: 11^{11/16"}x5^{13/64"}x2^{3/32"} (297x132x53mm)
Weight: 5.62lbs (2.55kg)

FDS 2.350*

Stereo Class D bridgeable amplifier
RCA low-level inputs
CEA power (4Ω): 2x105W RMS
Max. power (2Ω): 2x170W RMS
Max. power (4Ω bridged): 1x360W RMS
Configurable high-pass/low-pass crossover: 40Hz-400Hz
Full range mode
Bass boost (0-12dB)
Protections: Short-circuit/low impedance/reversal of polarity/DC/power drop/overheating protection
Dimensions (DxWxH): 7^{13/16"}x1^{11/16"}x4^{1/4"} (199x43x108mm)
Weight: 1.8lbs (850g)

* Within the limit of available product stock.



FSP-8

8-channel sound processor
Selectable high/low-level inputs for compatibility with factory or after-market head units
High-resolution digital input (24 bits/192kHz)
Auxiliary stereo input
Remote control with LED screen (sold separately)
Dimensions (LxHxW): 5^{5/16"}x8^{9/16"}x1^{7/8"} (135x218x48mm)
Audio specifications
Max output (with 10 kΩ): 3.4V
Frequency response (digital crossover off/-3 dB): 5Hz- 21kHz
Signal/noise ratio: -90dBA (analog input)/-99dBA (optical)
Distortion - 10 kΩ - @ 1kHz (with 22kHz low-pass filter): 0.02%



Manager Focal FSP-8 software

PC compatibility: Windows XP/Vista/Seven/8/10
Simplified set-up and dynamic help
Equaliser: 10 bands, fully customisable for every single channel
High-pass/low-pass filter/bandpass control: 16Hz - 20kHz
Delay adjustment range: 0-22ms per channel
Delay adjustment incrementation: 0.1ms
Phase inverter

FSP-8 remote control

Enables you to control the main functions of the FSP-8:
 Adjust overall gain, subwoofer volume, and input selection for the FSP-8
 Reminds you of the stored pre-sets
 Notched knob
 LED backlit screen
Dimensions (LxHxW): 1^{1/2"}x4^{5/16"}x1^{1/4"} (38x110x31.3mm)



PERFORMANCE

Create your sound

Are you passionate about your beautiful powerful car? Do you want to create a sound system that reflects who you are?

The Performance range, innovative and dynamic, delivers sound to make your spine tingle. Ultra-technical and assertively designed, Performance was conceived to bring extreme sensations. If the traditional **Access** line marks the entry-point to this technology universe, you can push the limits of your creativity to their very peaks with the **Expert** range. The young generation will also find with the **Auditor** line the Focal sound expertise at a very affordable budget. Power and fidelity work hand in hand: 'live' sound in all its dimensions for the most demanding music lovers.



D01

EXPERT
Live sound in all its dimension..... 32

D02

ACCESS
More than a name,
a compelling story 36

D03

AUDITOR
Your first installation
with Focal sound..... 38

FLAX

Patent n° WO2014/106713A1



Perfect balance for high dynamic

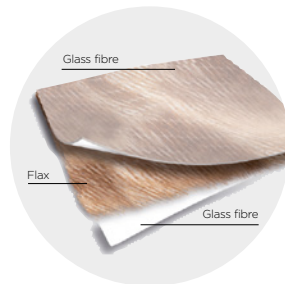
Over the last years, there have been many innovations regarding the materials used. The return to natural materials and their combination with modern composites has resulted in the creation of new kinds of modern hybrids.

The 'Sandwich' technology which we master perfectly with the K2 and 'W' cones is the best way to achieve a perfect balance between rigidity/weight/damping.

The key to success for a speaker cone made by Focal lies in the satisfaction of these conflicting criteria.

When it came down to the delicate choice regarding the design of the core of the sandwich structure, our engineers were soon impressed by the characteristics particular to Flax. After five years of research, the Flax sandwich cone was born. The use of an ecological textile such as flax, combined with our composite technology has led to an innovative solution for manufacturing sandwich structures: very high-quality flax fibres between two sheets of glass fibres. French flax is considered the best in the world, and another important detail is that the manufacturing process can be mechanised and automated.

The high-end products of our Expert line are the result of our constant efforts to differentiate ourselves and our goal to provide ultimate acoustic reproduction, featuring six Performance kits: the 'F' series.



> FLAX sandwich cone



> Aluminum/Magnesium inverted dome tweeter



> Aluminum basket



PS 130 F

2-way component kit
 Diameter: 5" (130mm)
 Flax sandwich cone
 Mounting depth: 2^{7/16}" (61.5mm)
 Voice-coil diameter: 1" (25mm)
 Voice-coil height: 0^{3/8}" (10mm)
 Magnet: 3^{1/2}" (85mm)
 Processed Aluminum/Magnesium inverted dome tweeter
 Separated crossover: 12-12dB/Oct
 Adjustable tweeter level: 0; -3dB/Oct
 Max. power: 120W
 Nom. power: 60W RMS
 Sensitivity (2.83V/1m): 90.4dB
 Frequency response: 75Hz-28kHz
 Supplied with grille



PS 165 F

2-way component kit
 Diameter: 6^{1/2}" (165mm)
 Flax sandwich cone
 Mounting depth: 2^{7/8}" (72.5mm)
 Voice-coil diameter: 1" (25mm)
 Voice-coil height: 0^{9/16}" (15mm)
 Magnet: 3^{1/2}" (85mm)
 Processed Aluminum/Magnesium inverted dome tweeter
 Separated crossover: 12-12dB/Oct
 Adjustable tweeter level: 0; -3dB/Oct
 Max. power: 140W
 Nom. power: 70W RMS
 Sensitivity (2.83V/1m): 91.6dB
 Frequency response: 60Hz-28kHz
 Supplied with grille



PS 165 FX



2-way component kit
 Diameter: 6^{1/2}" (165mm)
 Flax sandwich cone
 Mounting depth: 3^{1/16}" (77mm)
 Voice-coil diameter: 1^{1/4}" (32mm)
 Voice-coil height: 0^{9/16}" (15mm)
 Magnet: 3^{9/16}" (90mm)
 Processed Aluminum/Magnesium inverted dome tweeter
 Separated crossover: 12-18dB/Oct
 Adjustable tweeters level: 0; -3dB/Oct
 Max. power: 160W
 Nom. power: 80W RMS
 Sensitivity (2.83V/1m): 91.3dB
 Frequency response: 55Hz-28kHz
 Supplied with grille



PS 165 F3

3-way component kit
 Woofer diameter: 6^{1/2}" (165mm)
 Flax sandwich cone
 Midrange diameter: 3" (80mm)
 Woofer mounting depth: 3^{1/16}" (77mm)
 Midrange mounting depth: 1^{5/16}" (33.5mm)
 Magnet: 3^{9/16}" (90mm)
 Processed Aluminum/Magnesium inverted dome tweeter
 Separated crossover: 12-18dB/Oct
 Adjustable tweeters level: 0; -3dB/Oct
 Adjustable midranges level: HI-MID/Flat
 Max. power: 160W
 Nom. power: 80W RMS
 Sensitivity (2.83V/1m): 90.7dB
 Frequency response: 55Hz-28kHz
 Supplied with grille



PC 130 F

2-way coaxial kit
 Diameter: 5" (130mm)
 Flax sandwich cone
 Mounting depth: 2^{1/8}" (59.2mm)
 Voice-coil diameter: 1" (25mm)
 Voice-coil height: 0^{3/8}" (10mm)
 Motor: Ferrite
 Processed Aluminum/Magnesium inverted dome tweeter
 Integrated crossover: 6dB/oct
 Max. power: 120W
 Nom. power: 60W RMS
 Sensitivity (2.83V/1m): 90.5dB
 Frequency response: 75Hz-28kHz
 Impedance: 4Ω
 Supplied with grille



PC 165 F

2-way coaxial kit
 Diameter: 6^{1/2}" (165mm)
 Flax sandwich cone
 Mounting depth: 2^{7/8}" (72.50mm)
 Voice-coil diameter: 1" (25mm)
 Voice-coil height: 0^{1/2}" (13mm)
 Motor: Ferrite
 Processed Aluminum/Magnesium inverted dome tweeter
 Integrated crossover: 6dB/oct
 Max. power: 140W
 Nom. power: 70W RMS
 Sensitivity (2.83V/1m): 91.9dB
 Frequency response: 60Hz-28kHz
 Impedance: 4Ω
 Supplied with grille

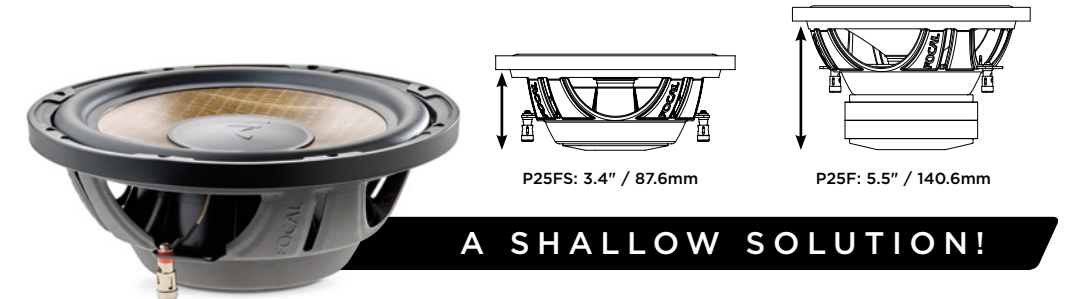


Easy integration, compactness and performances

We developed this Flax shallow subwoofer to answer the new trend of the market: discrete integration in small space as trunk or underseat location in pick up without compromise on the performances.

P 25 FS

Shallow subwoofer
 Diameter : 10" (250mm)
 Flax sandwich cone
 Mounting depth: 3^{29/64}" (87.6mm)
 Voice-coil diameter: 1^{1/2}" (38mm)
 Sealed enclosure:
 0.42 to 0.64 cu ft (12 to 18l)
 Motor : Dual ferrite
 Max. power: 560W
 Nom. power: 280 WRMS
 Sensitivity (2.83V/1m): 87dB
 Frequency response: 35Hz-400Hz



A SHALLOW SOLUTION!

PERFORMANCE EXPERT

Subwoofers 

P 20 F

Subwoofer
Diameter: 8" (200mm)
Flax sandwich cone
Mounting depth: 4^{39/64}" (117mm)
Single voice-coil: 1^{1/2}" (Ø38mm), 4Ω
Sealed enclosure: 0.35 to 0.53 cu ft (10 to 15l)
Ported enclosure: 0.35 to 0.70 cu ft (10 to 20l)
Double ferrite magnet: 4^{3/16}" (120mm)
Max. power: 500W
Nom. power: 250W RMS
Sensitivity (2.83V/1m): 82.5dB
Frequency response: 39Hz-500Hz



P 25 F

Subwoofer
Diameter: 10" (250mm)
Flax sandwich cone
Mounting depth: 5^{17/32}" (140.6mm)
Single voice-coil: 2" (Ø50mm), 4Ω
Sealed enclosure: 0.35 to 0.88 cu ft (10 to 25l)
Ported enclosure: 0.88 to 1.20 cu ft (25 to 35l)
Double ferrite magnet: 5^{1/16}" (145mm)
Max. power: 600W
Nom. power: 300W RMS
Sensitivity (2.83V/1m): 85dB
Frequency response: 33Hz-500Hz



P 30 F

Subwoofer
Diameter: 12" (300mm)
Flax sandwich cone
Mounting depth: 6^{5/16}" (160.5mm)
Single voice-coil: 2" (Ø50mm), 4Ω
Sealed enclosure: 1.06 to 1.40 cu ft (30 to 40l)
Ported enclosure: 1.4 to 2.10 cu ft (40 to 60l)
Double ferrite magnet: 5^{1/16}" (145mm)
Max. power: 800W
Nom. power: 400W RMS
Sensitivity (2.83V/1m): 86.7dB
Frequency response: 27Hz-500Hz



PERFORMANCE EXPERT

Compact enclosure

PSB 200

Compact passive subwoofer enclosure
Sealed technology
Subwoofer: 8" (200mm)
Dimensions (LxHxW): 19^{1/4} x 4^{19/64} x 11^{51/32}"
 (489 x 109 x 304mm)
Weight: 7kg (15.4lbs)
Impedance: 4Ω
Max. power: 250W
Nom. power: 150W RMS
Sensitivity (2.83V/1m): 83dB
Frequency response: 45Hz-150Hz
Accessories: screws, fixation system

NEW



PERFORMANCE EXPERT

2-way component kits & subwoofers

PS 165 V1

2-way component kit
Diameter: 6^{1/2}" (165mm)
Polyglass cone
Mounting depth: 2^{9/16}" (65.5mm)
Voice-coil diameter: 1" (25mm)
Voice-coil height: 0^{7/16}" (11.5mm)
Magnet: 3^{1/32}" (85mm)
Processed Aluminum inverted dome tweeter
Separated crossover: 0; -3; -6dB
Max. power: 160W
Nom. power: 80W RMS
Sensitivity (2.83V/1m): 92.5dB
Frequency response: 60Hz-20kHz
 Supplied with grille



Sub P 25 DB

Diameter: 10" (250mm)
Polypropylene cone
Mounting depth: 5^{29/64}" (138.6mm)
Dual voice-coil
Voice-coil diameter: 2" (50mm)
Voice-coil height: 1" (25mm)
Magnet: 5^{1/16}" (145mm)
Max. power: 500W
Nom. power: 250W RMS
Sensitivity (2.83V/1m): 90.9dB
Frequency response: 42Hz-500Hz
Impedance: 4Ω



Sub P 30 DB

Diameter: 12" (300mm)
Polypropylene cone
Mounting depth: 6^{5/16}" (160.5mm)
Dual voice-coil
Voice-coil diameter: 2^{3/8}" (60mm)
Voice-coil height: 1^{1/8}" (28mm)
Magnet: 5^{1/16}" (145mm)
Max. power: 600W
Nom. power: 300W RMS
Sensitivity (2.83V/1m): 93.4dB
Frequency response: 27Hz-500Hz
Impedance: 4Ω



PERFORMANCE EXPERT

Coaxial kits

PC 100

2-way coaxial kit
Diameter: 4" (100mm)
Polyglass cone
Mounting depth: 2" (51.5mm)
Voice-coil diameter: 1" (25mm)
Voice-coil height: 0^{3/8}" (9.5mm)
Magnet: 2^{13/16}" (72mm)
Processed Aluminum inverted dome rotating tweeter
Integrated crossover: 6dB/oct
Max. power: 100W
Nom. power: 50W RMS
Sensitivity (2.83V/1m): 90.9dB
Impedance: 4Ω
Frequency response: 100Hz-20kHz
 Supplied with grille



PC 130

2-way coaxial kit
Diameter: 5" (130mm)
Polyglass cone
Mounting depth: 2^{1/4}" (56.5mm)
Voice-coil diameter: 1" (25mm)
Voice-coil height: 0^{7/16}" (11mm)
Magnet: 3^{1/32}" (80mm)
Processed Aluminum inverted dome rotating tweeter
Integrated crossover: 6dB/oct
Max. power: 120W
Nom. power: 60W RMS
Sensitivity (2.83V/1m): 91.6dB
Impedance: 4Ω
Frequency response: 80Hz-20kHz
 Supplied with grille



PC 165

2-way coaxial kit
Diameter: 6^{1/2}" (165mm)
Polyglass cone
Mounting depth: 2^{9/16}" (65.5mm)
Voice-coil diameter: 1" (25mm)
Voice-coil height: 0^{7/16}" (11mm)
Magnet: 3^{1/8}" (80mm)
Processed Aluminum inverted dome rotating tweeter
Integrated crossover: 6dB/oct
Max. power: 160W
Nom. power: 80W RMS
Sensitivity (2.83V/1m): 93.6dB
Impedance: 4Ω
Frequency response: 60Hz-20kHz
 Supplied with grille



PERFORMANCE ACCESS

2 and 3-way component kits

130 AS

2-way component kit
 Diameter: 5" (130mm)
 DFS® cone (Dual Fiberglass Structure)
 Mounting depth: 2^{1/8"} (54.7mm)
 Voice-coil diameter: 1" (25mm)
 Voice-coil height: 0^{7/16"} (11mm)
 Magnet: 3^{1/2"} (85mm)
 Aluminum inverted dome tweeter
 Adjustable tweeter level: 3 positions (-3/0/+3dB)
 Separated crossover: 12/12dB/oct (5kHz)
 Max. power: 100W
 Nom. power: 50W RMS
 Sensitivity (2.83V/1m): 90dB
 Frequency response: 65Hz-20kHz
 Supplied with grille



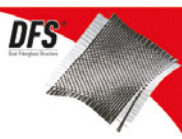
165 AS

2-way component kit
 Diameter: 6^{1/2"} (165mm)
 DFS® cone (Dual Fiberglass Structure)
 Mounting depth: 2^{1/2"} (62.9mm)
 Voice-coil diameter: 1" (25mm)
 Voice-coil height: 0^{7/16"} (11mm)
 Magnet: 3^{1/2"} (85mm)
 Aluminum inverted dome tweeter
 Adjustable tweeter level: 3 positions (-3/0/+3dB)
 Separated crossover: 12/12dB/oct (5kHz)
 Max. power: 120W
 Nom. power: 60W RMS
 Sensitivity (2.83V/1m): 91.3dB
 Frequency response: 60Hz-20kHz
 Supplied with grille



165 AS3

3-way component kit
 Woofer diameter: 6^{1/2"} (165mm)
 DFS® cone (Dual Fiberglass Structure)
 Midrange diameter: 3" (80mm)
 Woofer mounting depth: 2^{1/2"} (62.9mm)
 Midrange mounting depth: 1^{2/3"} (42.5mm)
 Voice-coil diameter: 1" (25mm)
 Voice-coil height: 0^{7/16"} (11mm)
 Magnet: 3^{1/2"} (85mm)
 Aluminum inverted dome tweeter
 Separated crossover: 6/12dB/oct (5kHz)
 Adjustable Tweeter level: 3 positions (-3/0/+3dB)
 Max. power: 160W
 Nom. power: 80W RMS
 Sensitivity (2.83V/1m): 90dB
 Frequency response: 55Hz-20kHz
 Supplied with grille



PERFORMANCE ACCESS

Coaxial kits

100 AC

2-way coaxial kit
 Diameter: 4" (100mm)
 Mounting depth: 2^{1/8"} (52.2mm)
 Voice-coil diameter: 1" (25mm)
 DFS® cone (Dual Fiberglass Structure)
 Voice-coil height: 0^{7/16"} (11mm)
 Magnet: 2^{5/16"} (72mm)
 Aluminum inverted dome tweeter
 Integrated crossover: (4.7kHz) 6dB/oct
 Max. power: 80W
 Nom. power: 40W RMS
 Sensitivity (2.83V/1m): 87.2dB
 Frequency response: 70Hz-20kHz
 Supplied with grille



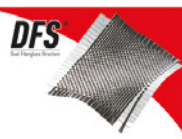
130 AC

2-way coaxial kit
 Diameter: 5" (130mm)
 Mounting depth: 2^{1/8"} (54.7mm)
 Voice-coil diameter: 1" (25mm)
 DFS® cone (Dual Fiberglass Structure)
 Voice-coil height: 0^{7/16"} (11mm)
 Magnet: 3^{1/2"} (85mm)
 Aluminum inverted dome tweeter
 Integrated crossover: (4.7kHz) 6dB/oct
 Max. power: 100W
 Nom. power: 50W RMS
 Sensitivity (2.83V/1m): 89.3dB
 Frequency response: 70Hz-20kHz
 Supplied with grille



165 AC

2-way coaxial kit
 Diameter: 6^{1/2"} (165mm)
 Mounting depth: 2^{1/2"} (62.9mm)
 Voice-coil diameter: 1" (25mm)
 DFS® cone (Dual Fiberglass Structure)
 Voice-coil height: 0^{7/16"} (11mm)
 Magnet: 3^{1/2"} (85mm)
 Aluminum inverted dome tweeter
 Integrated crossover: (4.7kHz) 6dB/oct
 Max. power: 120W
 Nom. power: 60W RMS
 Sensitivity (2.83V/1m): 91dB
 Frequency response: 60Hz-20kHz
 Supplied with grille



PERFORMANCE ACCESS

Coaxial kits

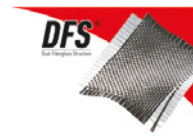
570 AC

2-way coaxial kit
 Woofer: 5x7" (130x180mm)
 DFS® cone (Dual Fiberglass Structure)
 Mounting depth: 2^{1/2"} (59.5mm)
 Voice-coil diameter: 1" (25mm)
 Voice-coil height: 0^{7/16"} (11mm)
 Magnet: 3^{1/2"} (85mm)
 Aluminum inverted dome tweeter
 Integrated crossover: (4.7kHz) 6dB/oct
 Max. power: 120W
 Nom. power: 60W RMS
 Sensitivity (2.83V/1m): 88.65dB
 Frequency response: 65Hz-20kHz
 Supplied without grille



690 AC

2-way coaxial kit
 Woofer: 6x9" (164x235mm)
 DFS® cone (Dual Fiberglass Structure)
 Mounting depth: 3^{1/8"} (81.7mm)
 Voice-coil diameter: 1^{3/16"} (30mm)
 Voice-coil height: 0^{7/16"} (11mm)
 Magnet: 3^{9/16"} (90mm)
 Aluminum inverted dome tweeter
 Integrated crossover: (4.7kHz) 6dB/oct
 Max. power: 150W
 Nom. power: 75W RMS
 Sensitivity (2.83V/1m): 91.3dB
 Frequency response: 50Hz-20kHz
 Supplied with grille



PERFORMANCE ACCESS

Subwoofer and bass enclosures

BOMBA BP20

Compact active subwoofer enclosure
 Class D amplifier
 High and low level audio input (OEM and after market head units compatibility)
 Bandpass technology
 Subwoofer: 8" (200mm)
 Dimensions (DxWxH): 17^{5/16"}x9^{13/16"}x 12^{1/16"} (439x249x323mm)
 Max. power: 300W
 Nom. power: 150W RMS
 Phase selector: 0-180°
 Adjustable frequency cut off: 45Hz-120Hz
 Frequency response: 20Hz-125Hz



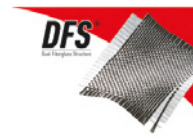
Sub 25 A4

Subwoofer
 Diameter: 10" (250mm)
 DFS® cone (Dual Fiberglass Structure)
 Mounting depth: 4^{63/64"} (126.6mm)
 Single voice-coil
 Voice-coil diameter: 2" (50mm)
 Voice-coil height: 1" (25mm)
 Magnet: 4^{1/4"} (120mm)
 Max. power: 400W
 Nom. Power: 200W RMS
 Sensitivity (2.83 V/1m): 85dB
 Frequency response: 36Hz-500Hz



Sub 30 A4

Subwoofer
 Diameter: 12" (300mm)
 DFS® cone (Dual Fiberglass Structure)
 Mounting depth: 4^{49/64"} (146.5mm)
 Single Voice-coil
 Voice-coil diameter: 2" (50mm)
 Voice-coil height: 1" (25mm)
 Magnet: 4^{1/4"} (120mm)
 Max. power: 500W
 Nom. Power: 250W RMS
 Sensitivity (2.83 V/1m): 87dB
 Frequency response: 32Hz-500Hz



PERFORMANCE AUDITOR

Coaxial kits

As well as all Focal's Car Audio solutions, Auditor kits feature an inverted dome tweeter for a true music precision in your car!

RCX-100

2-way coaxial kit
 Diameter: 4" (100mm)
 Polypropylene cone
 1" Mylar inverted dome tweeter
 Mounting depth: 1^{7/8"} (48.2mm)
 Voice-coil diameter: 1" (25mm)
 Magnet: 2^{5/8"} (76mm)
 Max. power: 60W
 Nom. power: 30W RMS
 Sensitivity (2.83V/1m): 88dB
 Frequency response: 80Hz-21kHz
 Supplied with grille, fastening and screws



RCX-130

2-way coaxial kit
 Diameter: 5" (130mm)
 Polypropylene cone
 1" Mylar inverted dome tweeter
 Mounting depth: 2^{9/16"} (54.5mm)
 Voice-coil diameter: 1" (25mm)
 Magnet: 3^{25/64"} (86mm)
 Max. power: 100W
 Nom. power: 50W RMS
 Sensitivity (2.83V/1m): 90dB
 Frequency response: 65Hz-21kHz
 Supplied with grille, fastening and screws



RCX-165

2-way coaxial kit
 Diameter: 6^{1/2"} (165mm)
 Polypropylene cone
 1" Mylar inverted dome tweeter
 Mounting depth: 2^{5/8"} (66.5mm)
 Voice-coil diameter: 1" (25mm)
 Magnet: 3^{25/64"} (86mm)
 Max. power: 120W
 Nom. power: 60W RMS
 Sensitivity (2.83V/1m): 91.5dB
 Frequency response: 60Hz-21kHz
 Supplied with grille, fastening and screws



RCX-570

2-way coaxial kit, elliptic
 Woofer: 5"x7" (130x180mm)
 Polypropylene cone
 Mounting depth: 2^{23/64"} (60mm)
 Voice-coil diameter: 1" (25mm)
 1" Mylar inverted dome tweeter
 Magnet: 3^{1/2"} (85mm)
 Max. power: 120W
 Nom. power: 60W RMS
 Sensitivity (2.83 V/1m): 91.6dB
 Frequency response: 60Hz-21kHz
 Supplied without grille



RCX-690

3-way coaxial kit, elliptic
 Woofer: 6"x9" (164x235mm)
 Mounting depth: 3^{11/64"} (80.5mm)
 Voice-coil diameter: 1^{3/8"} (35mm)
 Magnet: 4^{1/32"} (110mm)
 1" Mylar tweeter/medium
 Max. power: 160W
 Nom. power: 80W RMS
 Sensitivity (2.83V/1m): 92dB
 Frequency response: 50Hz-21kHz
 Supplied with grille, fastening and screws



PERFORMANCE AUDITOR

2-way component kits

RSE-130

2-way component kit
 Diameter: 5" (130mm)
 Polypropylene cone
 Mounting depth: 2^{9/16"} (54.5mm)
 Voice-coil diameter: 1" (25mm)
 Magnet: 3^{25/64"} (86mm)
 1" Mylar inverted dome tweeter
 Separated pre wired crossover (12dB/oct)
 Max. power: 100W
 Nom. power: 50W RMS
 Sensitivity (2.83V/1m): 90dB
 Frequency response: 65Hz-21kHz
 Supplied with grille, fastening and screws



RSE-165

2-way component kit
 Diameter: 6^{1/2"} (165mm)
 Polypropylene cone
 Mounting depth: 2^{5/8"} (66.5mm)
 Voice-coil diameter: 1" (25mm)
 Magnet: 3^{25/64"} (86mm)
 1" Mylar inverted dome tweeter
 Separated pre wired crossover (12dB/oct)
 Max. power: 120W
 Nom. power: 60W RMS
 Sensitivity (2.83V/1m): 91.5dB
 Frequency response: 60Hz-21kHz
 Supplied with grille, bindings and screws



PERFORMANCE AUDITOR

Subwoofers & Amplifier

RSB-250

Subwoofer
 Diameter: 10" (250mm)
 Polypropylene cone
 Mounting depth: 4^{39/64"} (117mm)
 Dual voice-coil: 4+4Ω
 Voice-coil diameter: 2" (50mm)
 Magnet: 5^{1/2"} (140mm)
 Max. power: 500W
 Nom. power: 250W RMS
 Sensitivity (2.83 V/1m): 88dB
 Frequency response: 35Hz-500Hz



RSB-300

Subwoofer
 Diameter: 12" (300mm)
 Polypropylene cone
 Mounting depth: 5^{59/32"} (142mm)
 Dual voice-coil: 4+4Ω
 Voice-coil diameter: 2" (50mm)
 Magnet: 5^{43/64"} (144mm)
 Max. power: 600W
 Nom. power: 300W RMS
 Sensitivity (2.83V/1m): 90dB
 Frequency response: 30Hz-500Hz



AP-4340

Class AB amplifier - 4/3/2 channels
 RCA inputs
 CEA Power (4Ω): 4x70W RMS
 Max. power (2Ω): 4x95W RMS
 Max. power (bridged 4Ω): 2x190W RMS
 High pass crossover (channel 1-2): 60Hz-1.2kHz
 High pass crossover (channel 3-4): 100Hz-2.2kHz
 Low pass crossover: 50-250Hz
 Full range mode
 Frequency response: 10Hz-30kHz
 Dimensions: (LxHxI): 13^{25/64"}x2"x9^{1/8"} (340x50x235mm)



INTEGRATION

Instant gratification

Do you have a car and like listening to music?
Do you want to improve its original audio system while keeping a discreet and perfectly integrated sound solution?

The solution is here: the Integration range of systems. Quick and easy to fit, even by owners themselves, these speakers guarantee the best of Focal Sound. There are no technical or aesthetic changes to your car interior; your car headunit is not changed, your steering-wheel controls work perfectly! At the heart of the **Universal** line, every compactly sized system is very simple to fit. If you have a vehicle covered by one of our dedicated kits, the **Plug & Play** range means you can enjoy an installation 100% compatible with original-fit equipment. Forget the old, now you can hear all the difference and live the emotion that comes from quality sound.



D1

PLUG & PLAY
Dedicated to your car 42

D2

UNIVERSAL
Total integration of Focal sound
in your car..... 46

INTEGRATION **PLUG & PLAY**

2-way component + coaxial kits
TOYOTA*

IS 165 TOY

2-way component kit
Cars compatibility**: Corolla, Yaris, Auris, Rav 4, Innova, Fortuner...
The tweeter needs to be adapted in factory location (fixing, glueing...)
Diameter: 6 1/2" (165mm)
Fiberglass cone
Aluminum inverted dome compact tweeter
Integrated crossover: 6dB/oct
Max. power: 120W
Nom. power: 60W RMS
Sensitivity (2.83V/1m): 91dB
Frequency response: 60Hz-20Khz
Nominal impedance: 4Ω



IS 690 TOY

2-way component kit
Cars compatibility**: Prius, Camry, Tacoma, Tundra, Alphard, FJ Cruiser...
The tweeter needs to be adapted in factory location (fixing, glueing...)
Diameter: 6"x9"
Fiberglass cone
Aluminum inverted dome compact tweeter
Integrated crossover: 6dB/oct
Max. power: 150W
Nom. power: 75W RMS
Sensitivity (2.83V/1m): 92dB
Frequency response: 50Hz-20kHz
Nominal impedance: 4Ω



TOYOTA* is a registered trademark.

IC 690 TOY*

2-way coaxial kit
Cars compatibility**: Prius, Camry, Tacoma, Tundra, Alphard, FJ Cruiser...
Diameter: 6"x9"
Fiberglass cone
Aluminum inverted dome compact tweeter
Integrated crossover: 6dB/oct
Max. power: 150W
Nom. power: 75W RMS
Sensitivity (2.83V/1m): 92dB
Frequency response: 50Hz-20kHz
Nominal impedance: 4Ω



IC 165 TOY

2-way coaxial kit
Cars compatibility**: Corolla, Yaris, Auris, Innova, Fortuner, Avanza, Altis, Hi-Lux, and for rear installation
Diameter: 6 1/2" (165mm)
Fiberglass cone
Aluminum inverted dome tweeter
Integrated crossover: 6dB/oct
Max. power: 120W
Nom. power: 60W RMS
Sensitivity (2.83V/1m): 91dB
Frequency response: 60Hz-20kHz
Nominal impedance: 4Ω



* Within the limit of available stock.
** Non-exhaustive list of vehicles (update on www.focal.com).
Assembly can be different by countries.

INTEGRATION **PLUG & PLAY**

2-way component + coaxial kits
VOLKSWAGEN*

IS 165 VW

2-way component kit
Cars compatibility front assembly*: Golf 6/Bora/Jetta ...
This kit can be assembled on the rear of: Golf 6/Tiguan
The tweeter needs to be adapted in factory location (fixing, glueing...)
Diameter: 6 1/2" (165mm)
Fiberglass cone
Aluminum inverted dome TN44 tweeter
Integrated crossover: 6dB/oct
Max. power: 120W
Nom. power: 60W RMS
Sensitivity (2.83V/1m): 92dB
Frequency response: 60Hz-20Khz
Nominal impedance: 4Ω



* Non-exhaustive list of vehicles (update on www.focal.com).
Assembly can be different by countries.

IC 165 VW

2-way coaxial kit
Rear or front assembly for car without tweeter factory location (Polo/Jetta...)*
Diameter: 6 1/2" (165mm)
Fiberglass cone
Aluminum inverted dome TN44 tweeter
Integrated crossover: 6dB/oct
Max. power: 120W
Nom. power: 60W RMS
Sensitivity (2.83V/1m): 92dB
Frequency response: 60Hz-20Khz
Nominal impedance: 4Ω



* Non-exhaustive list of vehicles (update on www.focal.com).
Assembly can be different by countries.

VOLKSWAGEN* is a registered trademark.

INTEGRATION **PLUG & PLAY**

IFP 207 
PEUGEOT*

IFP 207

2-way component kit
Cars compatibility (Front assembly):
- 207
- 307 (with technical modifications)
- 308 (with technical modifications)
Diameter: 6 1/2" (165mm)
Polyglass cone
TNB Aluminum/Magnesium inverted dome tweeter
Integrated crossover: 6/18dB/oct
Max. power: 140W
Nom. power: 70W RMS
Sensitivity (2.83V/1m): 92.7dB
Frequency response: 70Hz-25kHz



Installation 100% dedicated to Peugeot 207 in less than an hour.
Watch the demonstration video: www.focal.com/ifp207/en

Peugeot* is a registered trademark of PSA.

INTEGRATION **PLUG & PLAY**

2-way component + coaxial kits + subwoofer
BMW*

IFBMW-S



2-way component kit:

Cars compatibility:

- BMW 1 serie (E81/82/87/88/F20*)
- BMW 3 serie (E90/91/F30/F31*)
- BMW 5 serie (F10)*
- BMW X1 (E84)

Diameter: 4" (100mm)

Polyglass cone

TNB Aluminum/Magnesium

inverted dome tweeter

Integrated crossover: 18dB/oct (4kHz)

Max power: 80W

Nom power: 40W RMS

Sensitivity (2.83V/1m): 90.5dB

Frequency response: 85Hz-22kHz

Nominal impedance: 4Ω



IFBMW-C



2-way coaxial kit

Cars compatibility*:

- BMW 1 serie (E81/82/87/88/F20*)
- BMW 3 serie (E90/91/F30/F31*)
- BMW 5 serie (F10)*
- BMW X1 (E84)*

Diameter: 4" (100mm)

Polyglass cone

TNB Aluminum/Magnesium

inverted dome tweeter

Integrated crossover: 18dB/oct (4kHz)

Max power: 80W

Nom power: 40W RMS

Sensitivity (2.83V/1m): 90.5dB

Frequency response: 85Hz-22kHz

Nominal impedance: 4Ω



* Technical wire adaptation to fit in those cars models.
Non-exhaustive list of vehicles (update on www.focal.com).

* Technical wire adaptation to fit in those cars models.
Non-exhaustive list of vehicles (update on www.focal.com).

IFBMW-S



Installation 100% dedicated to BMW (3 Serie/1 Serie/X1)
in less than an hour.
IFBMW-S demonstration video: www.focal.com/ifbmw-s/en

IFBMW-C



Installation 100% dedicated to BMW (3 Serie/1 Serie/X1)
in less than an hour.
IFBMW-C demonstration video: www.focal.com/ifbmw-c/en

IFBMW-SUB.V2

Subwoofer (sold by unit)

Cars compatibility* (under the front seats in ABS factory location)

- BMW 1 Series (E81/82/87/88-F20/21),
- BMW 3 Series (E90/91/92/93-F30/F31),
- BMW X1 (E84),
- BMW 5 Series (F10/F11)

Possibilities of adaptation in other models.

Diameter: 8" (200mm)

Polypropylene cone

Mounting depth: 139/164mm (41mm)

Power, sensitivity and frequency response

were measured in real car situation

Max power: 180W

Nom power: 90W RMS

Sensitivity (2.83V/1m): 90.5dB (58Hz)

Frequency response: 38Hz-200Hz

Nominal impedance: 3.6Ω

Accessory: Metal grille (top cover)



* Upgrade for BMW* factory standard level.
Non-exhaustive list of vehicles.

BMW* is a registered trademark of BMW* group.

INTEGRATION **PLUG & PLAY**

Ultra-compact amplifier

IMPULSE 4.320

Class D ultra-compact 4 channels amplifier - 4/3/2 channels

CEA power (4Ω): 4x55W RMS

Power max (2Ω): 4x80W RMS

Power max (4Ω bridged): 2x160W RMS

Activatable/deactivatable crossovers fixed at 75Hz on channels 1/2

Configurable Crossovers from 40Hz-200Hz on channels 3/4

Adjustable Phase 0/180° on channels 3/4

Copy Mode (4CH/2CH)

Protections: Short circuit/over-current/reverse polarity/DC/voltage

drop/heat protection

Dimensions (HxWxD): 6 7/8" x 2 5/8" x 1 7/8" (175x66.5x47mm)

Weight: 1.2lbs (550g)



[NB : This pen is not for sale.
It only indicates scale.]



IY - AC IMPULSE 4.320

Adapter Y cable - Focal Impulse 4.320

ISO standard

Easy Plug & Play installation

Length: 1m

No soldering or modification of your original system

ISO standard compatible



INTEGRATION **PLUG & PLAY**

Active bass enclosures

Ibus 2.1

True 2.1 system - Unique concept!
1 amplifier for the subwoofer + 1 amplifier
for the front channels very high power.

Active enclosure with 8" (20cm) subwoofer

Max. power: 150W

Nom. power: 75W RMS

Frequency response: 45Hz-150Hz

High-level inputs

Autopower ON

Amplification 2 front channels

Nom. power: 2x55W RMS

Max. power: 2x110W max.

Dimensions (HxWxD):
2 13/16" x 13 9/16" x 9 3/16" (71.5x344x250mm)



Ibus 20

Active enclosure with 8" (20cm) subwoofer

Max.power: 150W

Nom. power: 75W RMS

Frequency response: 45Hz-150Hz

High-level inputs

Autopower ON

Dimensions (HxWxD):

2 13/16" x 13 9/16" x 9 3/16" (71.5x344x250mm)



IY Bus

Only one remote control to control the sound
level of the two Ibus enclosures (Ibus 20/2.1)
Supplied with cables



ISU 130

2-way component kit
 Diameter: 5" (130mm)
 Mounting depth: 1⁵⁹/₆₄" (48.9mm)
 Polyglass cone
 Voice-coil diameter: 1" (25mm)
 Aluminum/Magnesium inverted dome tweeter
 Integrated crossover (connectors): 6dB/oct
 Max. power: 120W
 Nom. power: 60W RMS
 Sensitivity (2.83V/1m): 91.8dB
 Frequency response: 90Hz-21kHz
 Accessories: tweeter support, crossover on connectors
 Supplied without grille



ISU 165

2-way component kit
 Diameter: 6¹/₂" (165mm)
 Mounting depth: 1²⁹/₃₂" (48.4mm)
 Polyglass cone
 Voice-coil diameter: 1" (25mm)
 Aluminum/Magnesium inverted dome tweeter
 Integrated crossover (connectors): 6dB/oct
 Max. power: 140W
 Nom. power: 70W RMS
 Sensitivity (2.83V/1m): 93dB
 Frequency response: 60 Hz-21kHz
 Accessories: tweeter support, crossover on connectors
 Supplied without grille



ISU 200

2-way component kit
 Diameter: 8" (200mm)
 Mounting depth: 2¹/₂" (63.5mm)
 Polyglass cone
 Voice-coil diameter: 1" (25mm)
 Aluminum/Magnesium inverted dome tweeter
 Integrated crossover (connectors): 6dB/oct
 Max. power: 160W
 Nom. power: 80W RMS
 Sensitivity (2.83V/1m): 93dB
 Frequency response: 40Hz-21kHz
 Accessories: tweeter support, crossover on connectors
 Supplied without grille



ISU 690

2-way component kit
 Diameter: 6x9" (164x235 mm)
 Mounting depth: 3⁹/₃₂" (83.5mm)
 Polyglass cone
 Voice-coil diameter: 1" (25mm)
 Aluminum/Magnesium inverted dome tweeter
 Integrated crossover (connectors): 6dB/oct
 Max. power: 160W
 Nom. power: 80 W RMS
 Sensitivity (2.83 V/1m): 93.6 dB
 Frequency response: 55 Hz - 21 kHz
 Accessories: tweeter support, crossover on connectors
 Supplied without grille



Tweeter TWU 1.5

Max. power: 100W
 Nom. power: 15W RMS
 Sensitivity (2.83V/1m): 94dB
 Integrated crossover: 6dB/oct
 Aluminum/Magnesium inverted dome tweeter
 4 possibilities: Flush, surface, tilted mouting, in factory location



* Aluminum/Magnesium

Inverted Al/Mg* dome tweeter
 Compact Shape
 Clearer and more detailed sound
 Easy installation

Basket
 Optimized dimensions
 and depth

EASILY IMPROVE...

ICU 100

2-way coaxial kit
 Diameter: 4" (100mm)
 Mounting depth: 3⁵/₁₆" (49mm)
 Polyglass cone
 Voice-coil diameter: 1" (25mm)
 Aluminum/Magnesium inverted dome tweeter
 Integrated crossover: 6dB/oct
 Max. power: 80W
 Nom. power: 40W RMS
 Sensitivity (2.83V/1m): 90.3dB
 Frequency response: 90Hz-21kHz
 Supplied without grille



ICU 130

2-way coaxial kit
 Diameter: 5" (130mm)
 Mounting depth: 1⁵⁹/₆₄" (48.9mm)
 Polyglass cone
 Voice-coil diameter: 1" (25mm)
 Aluminum/Magnesium inverted dome tweeter
 Integrated crossover: 6dB/oct
 Max. power: 120W
 Nom. power: 60W RMS
 Sensitivity (2.83V/1m): 91.8dB
 Frequency response: 80Hz-21kHz
 Supplied without grille



ICU 165

2-way coaxial kit
 Diameter: 6¹/₂" (165mm)
 Mounting depth: 2" (50mm)
 Polyglass cone
 Voice-coil diameter: 1" (25mm)
 Aluminum/Magnesium inverted dome tweeter
 Integrated crossover: 6dB/oct
 Max. power: 140W
 Nom. power: 70W RMS
 Sensitivity (2.83V/1m): 93dB
 Frequency response: 60 Hz-21kHz
 Supplied without grille



ICU 570

2-way coaxial kit
 Diameter: 5x7" (130x180mm)
 Mounting depth: 2⁹/₁₆" (59.3mm)
 Polyglass cone
 Voice-coil diameter: 1" (25mm)
 Aluminum/Magnesium inverted dome tweeter
 Integrated crossover: 6dB/oct
 Max. power: 120W
 Nom. power: 60W RMS
 Sensitivity (2.83V/1m): 94dB
 Frequency response: 65Hz-21kHz
 Supplied without grille

ICU 690

2-way coaxial kit
 Diameter: 6x9" (165x237mm)
 Mounting depth: 3⁹/₃₂" (32.5mm)
 Polyglass cone
 Voice-coil diameter: 1" (25mm)
 Aluminum/Magnesium inverted dome tweeter
 Integrated crossover: 6dB/oct
 Max. power: 160W
 Nom. power: 80W RMS
 Sensitivity (2.83 V/1m): 93.6dB
 Frequency response: 55Hz-21kHz
 Supplied with grille

...YOUR OEM AUDIO SYSTEM

Flush inverted Al/Mg* dome tweeter
 Easy and optimized
 installation

Adjustable Tweeter Level
 High frequencies
 performance tuning



ACCESSORIES

When you replace your factory audio system, you're bound to have high expectations in terms of acoustics. Accessories are essential components of your audio architecture for helping you to achieve the sound you want. Focal offers various solutions for meeting your amplification needs with the **Hilo V2**. Accessories and cables also optimise the connections between your system's elements: the head unit, the electronics and the acoustic components. They guarantee high-quality audio and ensure the safety of your hi-fi installation, and they meet your expectations in terms of hi-fi quality.

By using the appropriate accessories, you're sure to get the best out of your audio system.



ACCESSORIES

Hilo.V2

Converts a stereo amplified signal in two low-level line outputs for an amplifier.
Eliminates parasitic interferences - separated grounds
Selectable DC and AC voltages detection and is compatible with any original manufacturer head-units.
It automatically generates a remote control signal to activate the associated amplifier can be used in passive mode without 12V power supply (In that case the remote output doesn't work).

HILO.V2

High-level to RCA line stereo converter
Converts a stereo amplified signal in two low-level line outputs for an amplifier
Bandwidth: (+/-1dB) : 10Hz - 80kHz
Signal/Noise ratio > 100dB
Distorsion < 0.01%
DC and AC detection modes
Automatic remote output



ACCESSORIES

Cables



PK8

8 AWG Complete supply kit
(Amplifier-speakers)
16ft (4.9m) supply cable (8.3mm²)
3.3ft (1m) ground cable (8.3mm²)
32.8ft (10m) speaker cable
16.4ft (5m) remote cable
16.4ft (5m) RCA cable
(2x90° bent plugs and 2 straight plugs)
60A fuse-box
Accessory pack

PK21

4AWG Complete supply kit
(Amplifier-speakers)
16ft (4.9m) supply cable (21mm²)
3.3ft (1m) ground cable (21mm²)
32.8ft (10m) speaker cable
16.4ft (5m) remote cable
16.4ft (5m) RCA cable
(2x90° bent plugs and 2 straight plugs)
80A fuse-box
Accessory pack

ER1

RCA cable
1x1m (3.3ft)

ER5

RCA cable
1x5m (16.4ft)

ER3

RCA cable
1x3m (9.9ft)

EY05

RCA cable
2x0.5m (2x1.64ft)



ES15

1 roll: 15 AWG
12mx1.5mm²
(39ft)

ES4

1 roll: 11 AWG
12mx4mm²
(39ft)



ES25

1 roll: 13 AWG
12mx2.5mm²
(39ft)



PR5

RCA cable
5m (16.4ft)
Male/male plugs
2x90° bent plugs
for difficult locations

PS15

Flat speaker cable.
15 AWG/1.5mm²
High performances, easy to install.
Soft touch insulant.
Roll: 39ftx15 AWG
(12mx1.5mm²)



PS25

Flat speaker cable.
13 AWG/2.5mm²
High performances, easy to install.
Soft touch insulant.
Roll: 39 ftx13 AWG
(12mx2.5mm²)

ACCESSORIES

Acoustic insulation & tools

B.A.M.

3 technical materials, 3 strategic functions

This acoustic insulation kit is completing and essential to a quality car audio installation. From its use depends optimum acoustic rendering of speakers, amplifiers and installed accessories. Technical materials made of honeycombed damping material, an aluminum sheet and a viscoelastic complex (Butyl).

B.A.M. XXXL

1 roll of 19^{11/16}"x236^{1/4}" (50x600cm) (3m²)



Tool Set

Set of 11 composite tools to remove door panel. The complementary product for quality car audio installations without risk of aesthetic damage.



B.A.M.

2 sheets 8^{1/4}"x11^{13/16}"
(21x30cm)



B.A.M. XL

1 sheet 19^{11/16}"x78^{3/4}"
(50x200cm) (1m²)

classic loudspeakers



headphones & multimedia



car audio



studio monitors



FOCAL

Focal-JMlab* - BP 374 - 108, rue de l'Avenir - 42353 La Talaudière cedex - France - +33 (0) 477 435 700

Focal* is a registered trademarks of Focal-JMlab*. Non-binding pictures. Photos L'Atelier Sylvain Madelon. SCAA180925/9 - PC1122
Due to constant technological advances, Focal-JMlab* reserves its right to modify prices and specifications without notice.



EXP - GB
October 2018